

Agenda: Public Meeting Development in Ellerslie

- ▶ 7.30 Welcome - Chair Glen McCabe
 - ▶ Introduction of speakers
- ▶ 7.35 Opening statements from speakers
 - ▶ Ten minutes each
- ▶ 7.55 Questions from residents
 - ▶ Your chance to raise your concerns!
 - ▶ Find out what the rules actually are and what can actually happen moving forward
- ▶ 9.00 Meeting closes

Welcome!

Public Meeting: Development in Ellerslie

- ▶ Originally scheduled for September 2021
- ▶ An informational session to help you find out
 - ▶ What the new rules are
 - ▶ What their impact may be
- ▶ Speakers have volunteered their time to help us understand
 - ▶ Experts but not rule-makers
- ▶ Decisions have been made at central Government level
 - ▶ Local communities and councils have very limited leeway to change the direction set
- ▶ But first step toward community involvement is understanding
 - ▶ What the new rules are and aim for
 - ▶ What the new rules do and do not permit
- ▶ Let's create a constructive, positive session together!

Acknowledgements

- ▶ Speakers
- ▶ Residents
- ▶ Ōrākei Local Board
- ▶ Ellerslie Business Association
- ▶ Ellerslie Theatre Company

Introduction of Speakers

Troy Churton and Mark Arbuthnot

▶ Troy Churton

- ▶ Member, Ōrākei Local Board
- ▶ Specialist in urban planning and resource management frameworks and processes
- ▶ Advocate for community engagement in recreational areas such as Ōrākei Basin Walkway, Colin Maiden Park and Liston Park
- ▶ Head of Membership & Partnerships at Financial Services Council NZ
- ▶ Speak from a Local Board and resource management perspective

▶ Mark Arbuthnot

- ▶ Director at Bentley & Co.
- ▶ 20+ years' experience in local authority town planning and resource consent
- ▶ Wynyard Quarter redevelopment, large shopping centres, advising port companies...
- ▶ Speaks from a town planning and development perspective

Big Questions to Address

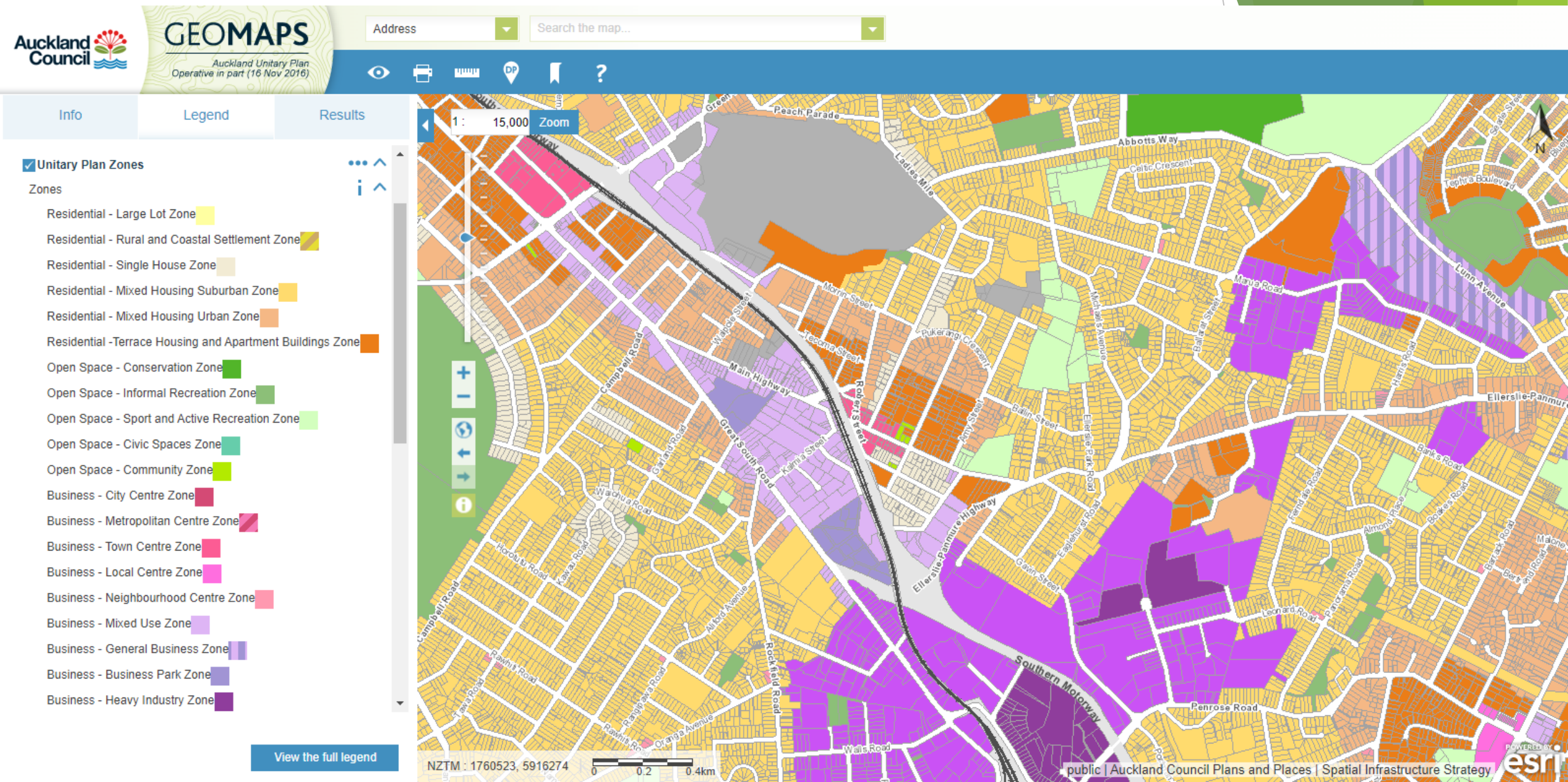
- ▶ What can happen in Ellerslie in the future?
- ▶ What can residents do about it?

More specifically...

- ▶ What is the National Policy Statement on Urban Development (NPS-UD)?
- ▶ How does it differ from the Unitary Plan?

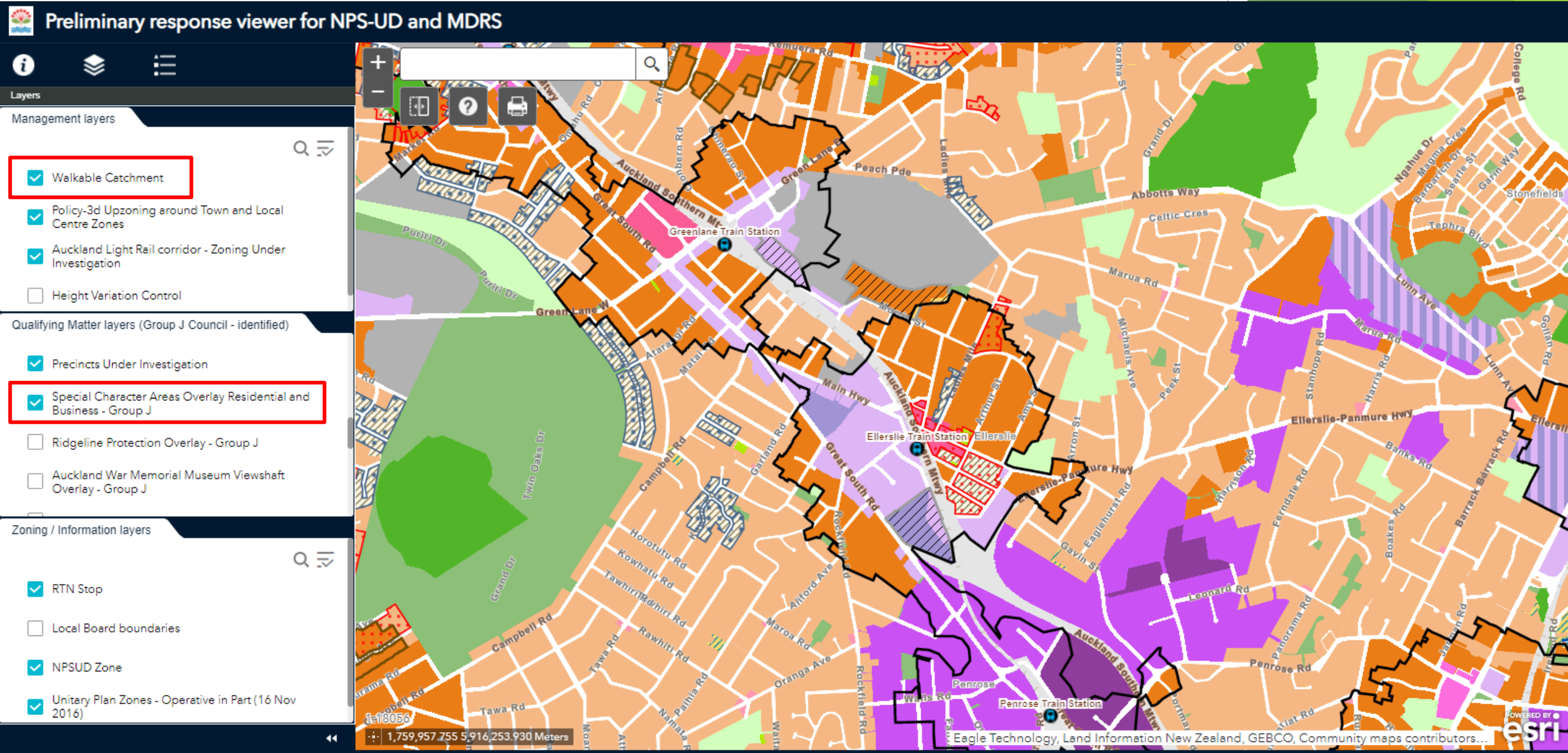
Kickoff: Maps

- ▶ Current Unitary Plan Map
- ▶ From: unitaryplanmaps.aucklandcouncil.govt.nz/upviewer



Kickoff: Maps

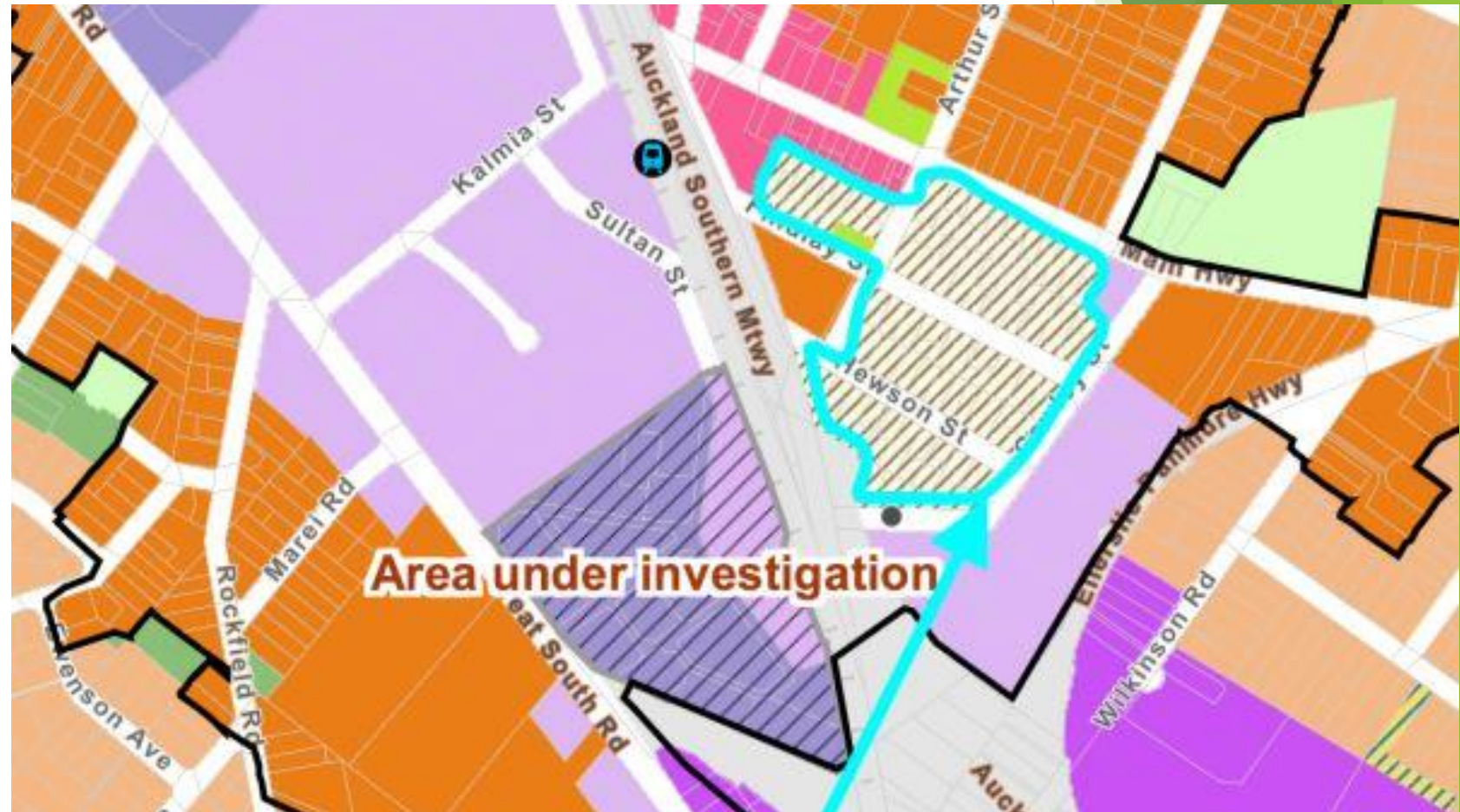
- ▶ Council NPS-US Response Map From: akhaveyoursay.aucklandcouncil.govt.nz/housing
- ▶ Added “Walkable Catchment”: Up to six stories within 800 metres of transit stop (e.g. Ellerslie Station)
- ▶ “Special Character Area” protection: Removed Hewson/Findley/Ramsgate block, removed business area classification



Example of Zoning Changes:

Loss of “Special Character Area” protection

- ▶ Ramsgate-Findlay-Hewson-Cawley Streets block loses “Special Character Area” protection
 - ▶ Retained for Christ Church
- ▶ Still single house zone, but easier to develop?



Questions to Candidates from Residents

- ▶ From the floor
 - ▶ Brief questions please, not statements
- ▶ Speakers have one-two minutes to answer
- ▶ Follow-up questions are welcome
 - ▶ Please just raise your hand
- ▶ Please be as constructive as possible!

Thank you all!

