



AGM and Maungakiekie Electorate Candidates Meeting

5 October 2020, Leicester Hall, Ellerslie

- 7PM: AGM
- 7.30PM: Candidates Meeting

Agenda: AGM

1. Welcome and introductions of the ERA committee
2. Adoption of the minutes of the last AGM
3. Chair's report
4. Financial Report
5. Motion to not require an auditor
6. 2019-20 achievements
7. Projects for 2020-21
8. Election of Committee
 - ▶ *Note only financial members can vote

Acknowledgements

Apologies

- ▶ Megan Darrow
- ▶ Jeanine Devaroyan
- ▶ Scott Milne
- ▶ Ron Seeto
- ▶ Desley Simpson

Current Committee

- ▶ Madeline Banda (Treasurer)
- ▶ Jeanine Devaroyan (Secretary)
- ▶ Glen McCabe (Chair)
- ▶ Ron Seeto
- ▶ Cathy Summers
- ▶ Jane Vermeer

Minutes of 2019 AGM

- ▶ (see separate document)

Chair's Report

- ▶ Ellerslie Residents Association (ERA) continues to work closely with the community and advocate on their behalf
- ▶ I would like to acknowledge the work of my colleagues in the past year
- ▶ We have enjoyed great support from the current Orakei Local Board in particular our allocated members Troy Elliott and David Wong
- ▶ I would like to also thank the Maungakiekie-Tāmaki Councillor Josephine Bartley on her work in the Ellerslie community
- ▶ ERA also continued to have a great relationship with the Ellerslie Business Association in the past year
- ▶ ERA admin - Rules revision

Financial Report

Ellerslie Residents Association Inc #2198633
Financial Statement for 12 months ended June 30 2020

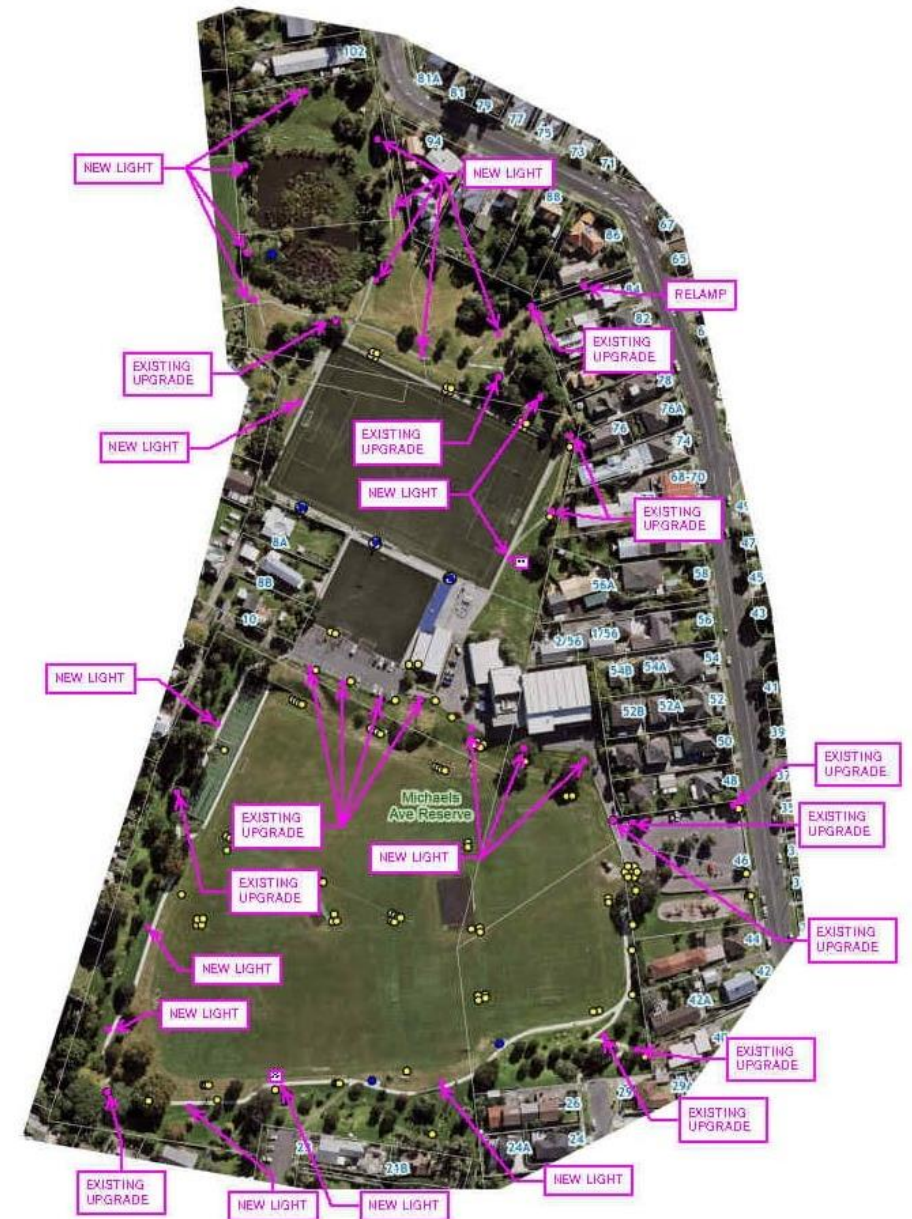
Annual General Meeting held 05/10/20

	12 months Jun-20	12 months Jun-19		12 months Jun-20	12 months Jun-19
Income			Assets		
Subscriptions and Joining Fees	\$ 450.00	\$ 450.00	Operating Account	\$ 6,452.15	\$ 1,392.61
Donations	\$ 10.00	\$ 40.00	Members Reserve Fund	\$ 3,000.00	\$ 3,000.00
Orakei Local Board Grants	\$ 7,500.00	\$ -	Total Cash Assets	\$ 9,452.15	\$ 4,392.61
Other	\$ 17.27	\$ -			
			Liabilities		
Total Income	\$ 7,977.27	\$ 490.00	Creditors	\$ -	\$ -
Expenditure			OLB Advance	\$ 4,697.61	\$ -
			Total Liabilities	-\$ 4,697.61	\$ -
Printing and Stationery	\$ -	\$ -			
Database	\$ 724.44	\$ 707.19	Total Assets	\$ 9,452.15	\$ 4,392.61
Ellerslie Songbird Project	\$ 1,917.69	\$ 884.70	Less Total Liabilities	\$ 4,697.61	\$ -
Venue Hire	\$ -	\$ -			
Website Expenses	\$ 165.60	\$ -	Net Assets (Liabilities)	\$ 4,754.54	\$ 4,392.61
Street Signs	\$ -	\$ -			
Bank Fees	\$ -	\$ 20.00	Net Funds as at 30/06/2020	\$ 4,754.54	\$ 4,392.61
Total Expenditure	\$ 2,807.73	\$ 1,611.89			
Total Income	\$ 7,977.27	\$ 490.00			
Less Expenditure	\$ 2,807.73	\$ 1,611.89			
Net Surplus	\$ 5,169.54	-\$ 1,121.89			

► Motion to not require an auditor

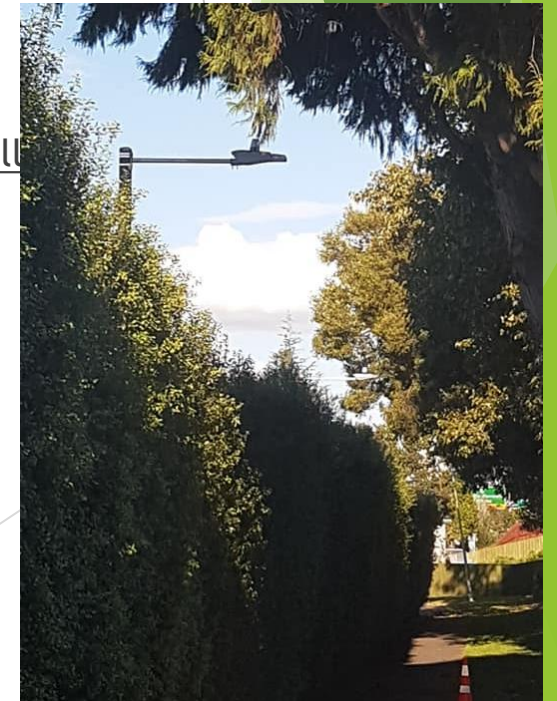
2019-2020 Achievements part 1

1. Michaels Ave Reserve pathway lighting
 - ▶ Massive safety and amenity improvement!
 - ▶ From a handful of working lights to over 40
 - ▶ Also some footpath repairs and two new park benches



2019-20 Achievements part 2

2. E-waste collection event - OLB grant
 - ▶ Scheduled for Saturday 31 October
 - ▶ Residents of Ellerslie can drop off (normally charged) items for free!
3. Public meeting March 2020 re Ōrākei Local Board Plan community
 - ▶ Cancelled due to COVID-19
4. Ellerslie Songbird Project - OLB grant
 - ▶ Trapping rats to enable native birds to thrive
 - ▶ Highly successful in eastern suburbs, strong takeup here too
 - ▶ Support also gratefully received from Ellerslie Business Association and Barfoot & Thompson Ellerslie
5. Improved lighting on Hewson/Findlay walkway by the train station - OLB/EBA
 - ▶ Longer arms on lights mean much less shading by the hedge → improved safety
 - ▶ Widening of the footpath to 2.5 metres completed
6. Worked with Living Streets (Council agency) on footpath upgrade projects
 - ▶ Improved communication with residents
7. ERA website relaunched, Rules revamped
8. Strong working relationship with EBA



Projects for 2020-21

1. Continue to work closely with Ōrākei Local Board on issues such as traffic safety
 - ▶ Active engagement with the new Ellerslie Safety Working Group
 - ▶ AT, OLB, EBA, MP, Councillor - consensus building forum → public consultation → action
 - ▶ Particularly pedestrian safety and intersection improvements
 - ▶ Relocating the Ladies Mile cycle lane to a better location
 - ▶ Opening the Ballarat St paper road to pedestrians and cyclists
2. Ongoing working relationship with the Ellerslie Business Association
3. Expand the Ellerslie Songbird Project
4. Michaels Avenue Reserve
 - ▶ Continued engagement with OLB and sports clubs
 1. Clubhouse project - construction starting December/February
 2. Path lighting improvements completion
 3. Tree planting
5. Continue to work with Living Streets and other Council agencies
6. Revamp and update ERA website
7. And to work on your big ideas!

Ellerslie Cycleway Concept

- ▶ North-south connection for school students, leisure, commuting (train station access, on to Tamaki Drive)
- 1. Relocate Ladies Mile cycle lane, create a safe, separated cycleway on Amy St/Arron St...
- 2. Reopen Gavin St-McNab St connection
 - ▶ Address motorway severance
 - ▶ Provide choice of getting to work in Penrose
 - ▶ Access from Gavin St carpark to Penrose Station



Ellerslie Community Centre Concept

- ▶ The need for a community hub for school students, new parents... continues to grow
- ▶ Ellerslie town centre has great commercial facilities but lacks quality public facilities such as a community centre and kid's playground
- ▶ Potential for tie-in with the refurbishment of War Memorial Hall
- ▶ Potential for PPP funding?
- ▶ Examples of how the ERA advocates for both
 - ▶ Big, visionary ideas
 - ▶ Small, incremental improvements



Committee Nominations for 2020/2021

- ▶ Madeline Banda (renominating as Treasurer)
- ▶ Jeanine Devaroyan (renominating as Secretary)
- ▶ Glen McCabe (renominating as Chair)
- ▶ Ron Seeto
- ▶ Cathy Summers
- ▶ Jane Vermeer

ERA Rules Revision

- ▶ Current Rules date from 2012
- ▶ No longer relevant to what ERA does now
 - ▶ References to ERROS
 - ▶ No references to electronic meetings
- ▶ Heavy and complex document
 - ▶ Needs simplification!

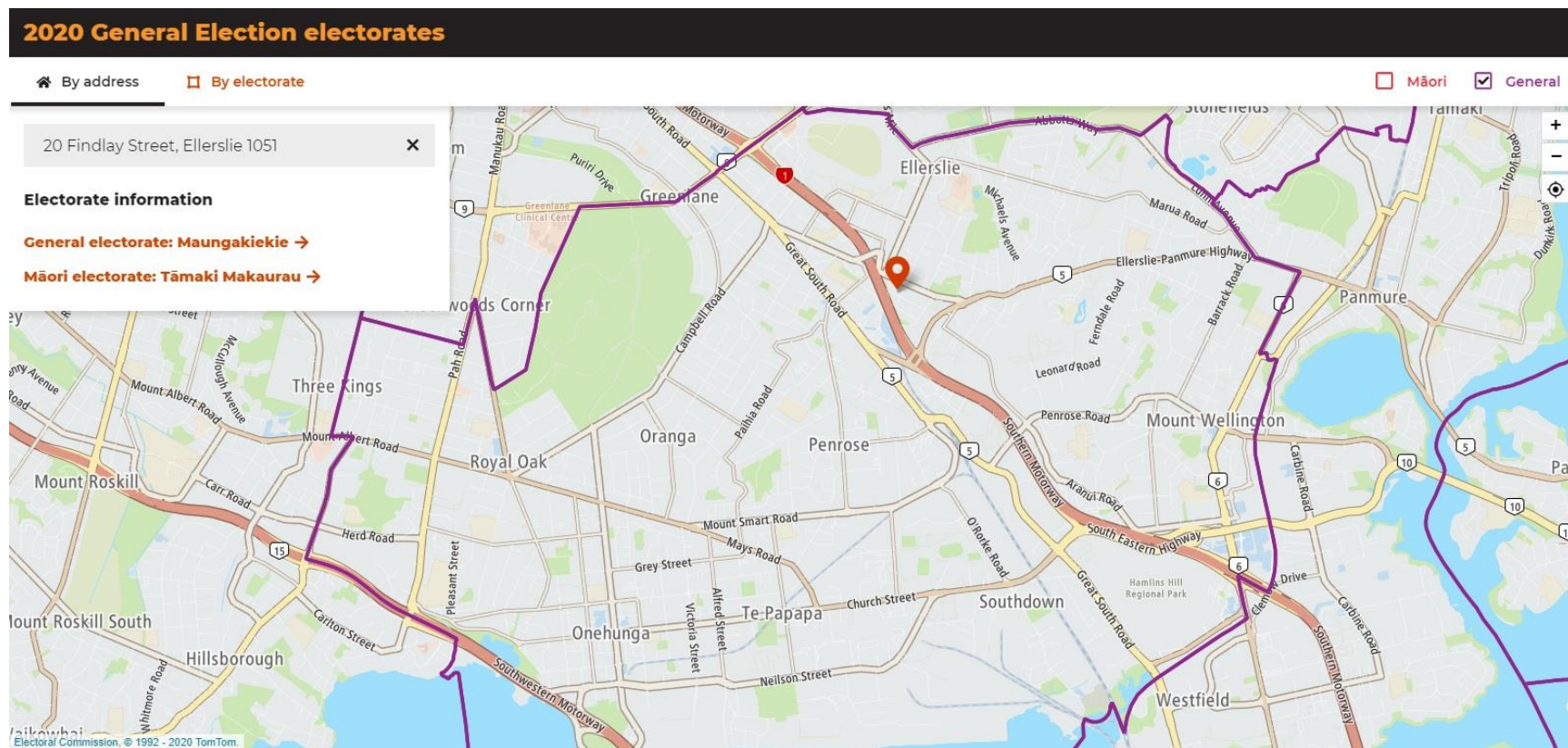
AGM Concludes

- ▶ Thanks everyone for your time!
- ▶ Please join us!

Agenda: Candidate Meeting

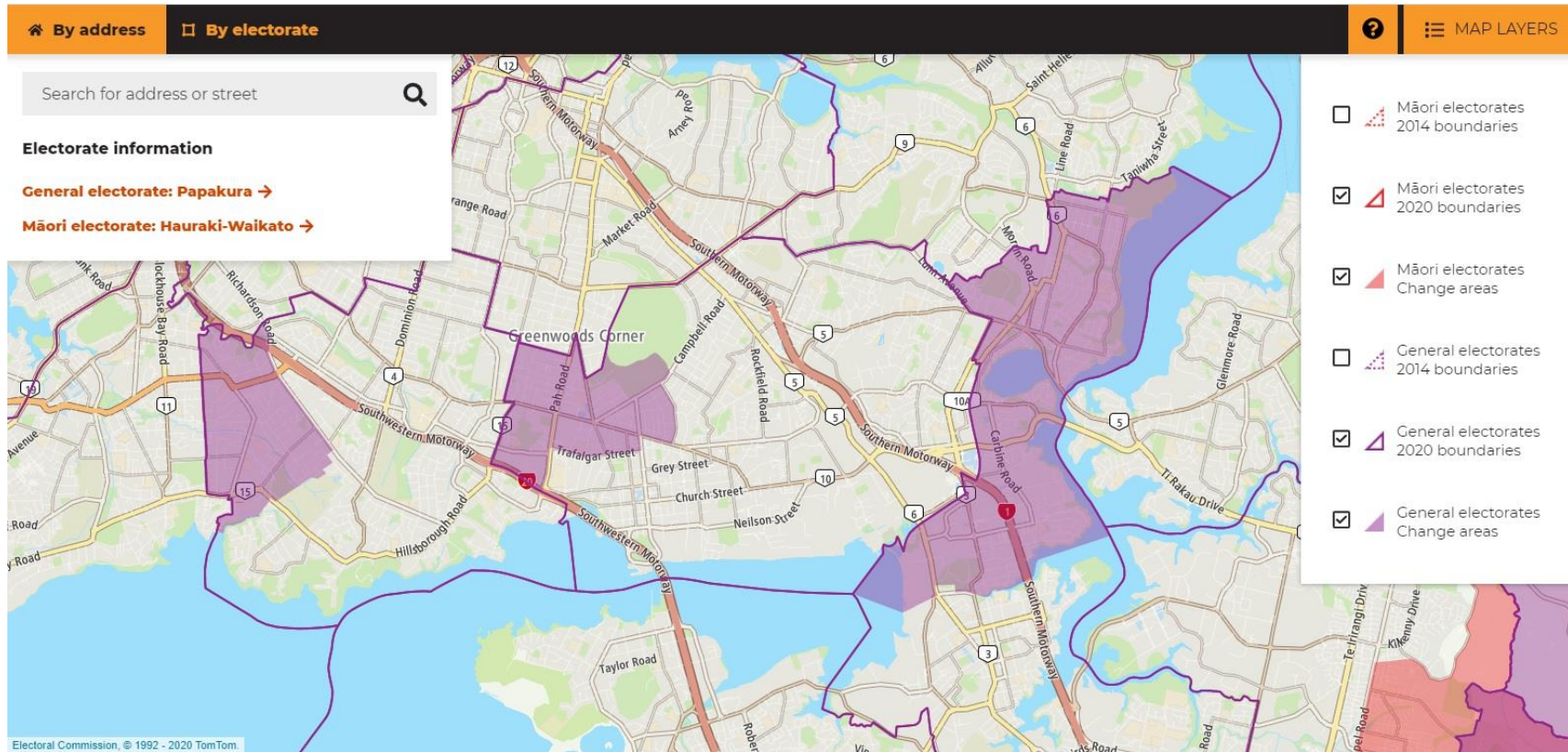
- ▶ 7.30 Welcome - Chair Glen McCabe
 - ▶ Including map of electorate boundary
- ▶ 7.35 Opening statements from candidates
 - ▶ Two minutes each
- ▶ 7.45 Questions from the ERA to candidates
 - ▶ 90 seconds each, four questions
- ▶ 8.10 Questions from residents
 - ▶ One minute each to respond, all candidates will have the opportunity to comment
- ▶ 9.00 Meeting closes

Boundary Map - 2020 election



- From <https://vote.nz/enrolling/get-ready-to-enrol/find-your-electorate-on-a-map/>

Boundary Map - changes



- ▶ Maungakiekie electorate has shifted to the west
- ▶ Ellerslie is unaffected
- ▶ From <https://vote.nz/enrolling/get-ready-to-enrol/find-your-electorate-on-a-map/>

Opening Statements from Maungakiekie Electorate Candidates

- ▶ Two minutes each
- ▶ Philip Holder
 - ▶ New Conservative Party
- ▶ Denise Lee
 - ▶ National Party
- ▶ Ricardo Menéndez March
 - ▶ Green Party
- ▶ Priyanca Radhakrishnan
 - ▶ Labour Party

Questions to Candidates from the ERA - 1

- ▶ 90 seconds each
- ▶ Transport
 - ▶ What is each candidate's vision regarding the future of transport in Auckland, and how does Ellerslie fit into that?
 - ▶ What changes and investments should be made to cope with growth and enable mobility?

Questions to Candidates from the ERA - 2

- ▶ CCOs
 - ▶ What role can central government play in improving their operations and governance?
 - ▶ Given the current water crisis, do the candidates see a role for central government in ensuring the security of water supply?

Questions to Candidates from the ERA - 3

- ▶ Livability
 - ▶ The ERA's vision is making Ellerslie Auckland's most livable suburb. How would each candidate interpret that?
 - ▶ What are the candidates' priorities in terms of livability, such as enhancing green spaces, promoting recycling, improved lighting in public spaces?
 - ▶ What role should central government play to support caring for our environment?

Questions to Candidates from the ERA - 4

- ▶ Safety
 - ▶ What is each candidates' understanding of the situation in Ellerslie and their priorities in terms of policing?
 - ▶ What are the candidates' priorities in terms of transport safety?
 - ▶ For motorists, pedestrians, cyclists, people on scooters, people with disabilities, etc.

Questions to Candidates from Residents

- ▶ From the floor
 - ▶ Brief questions please, not statements
- ▶ Candidates have one minute to answer
 - ▶ Questions may be directed at one or all candidates
 - ▶ Other candidates will have the chance to reply

Thank you all!